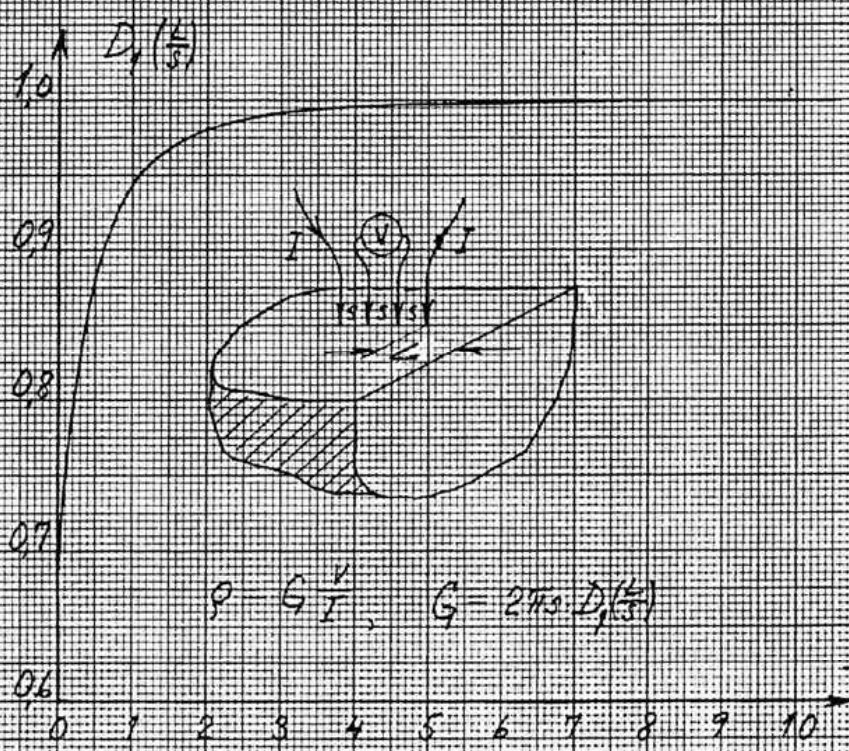
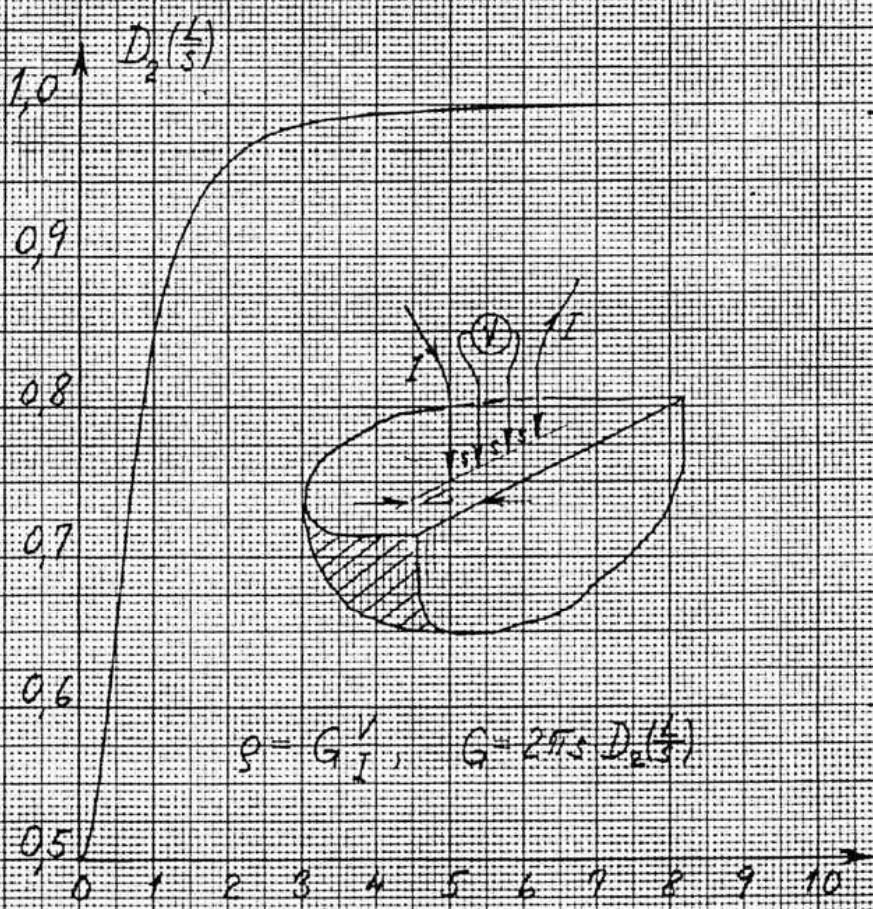


Quarter-infinite volume.



$\frac{L}{S}$	$D_1\left(\frac{L}{S}\right)$
0	0.6897
0.1	0.7502
0.2	0.7965
0.5	0.8821
1	0.9438
2	0.9809
5	0.99913
10	0.99972
10	0.99995



$\frac{L}{S}$	$D_2\left(\frac{L}{S}\right)$
0	0.5
0.1	0.5086
0.2	0.5329
0.3	0.5691
0.5	0.6580
0.7	0.7445
1	0.8422
1.4	0.9162
2	0.9635
3	0.9876
5	0.9971
10	0.9996