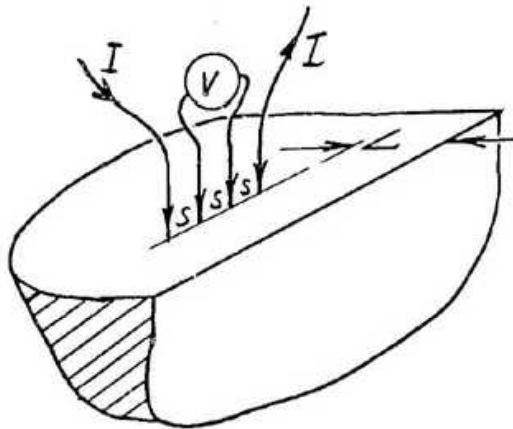


C.2) Probe Array Parallel to Edge.Figure 15:

The resistivity is given by (a):  $\rho = G \frac{V}{I}$ ,

$G = 2\pi s \cdot D_2 \left( \frac{L}{s} \right)$  when

$$D_2 = \frac{1}{1 + \frac{2}{\sqrt{1 + (2L/s)^2}} - \frac{1}{\sqrt{1 + (\frac{L}{s})^2}}}; \quad (9)$$

$D_2 \left( \frac{L}{s} \right)$  is tabulated and plotted on page 12.