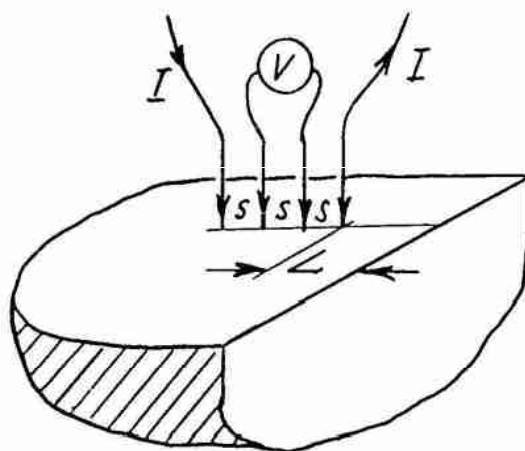


C. QUARTER-INFINITE VOLUME.C.1) Probe Array Perpendicular to Edge.Figure 14:

The resistivity of the sample is given by (a):

$$\rho = G \frac{V}{I},$$

$$G = 2\pi s \cdot D_1 \left(\frac{L}{s} \right), \text{ where}$$

$$D_1 = \frac{1}{1 + \frac{s}{2L+s} - \frac{s}{2L+2s} - \frac{s}{2L+4s} + \frac{s}{2L+5s}} \quad (8)$$

$D_1 \left(\frac{L}{s} \right)$ is tabulated and plotted on page 12.